

Madison Area Technical College
Five-Year Program Trends for Photography Program
Program Code:102031

		Fall Semester				
		2003-04	2004-05	2005-06	2006-07	2007-08
Program Enrollment		72	87	95	101	69
Age	Age % 22 & Under	52.8%	64.4%	73.7%	70.3%	68.1%
	Age % 23-39	37.5%	27.6%	20.0%	24.8%	27.5%
	Age % 40 & Over	9.7%	8.0%	6.3%	5.0%	4.3%
	Age % Not Available	0.0%	0.0%	0.0%	0.0%	0.0%
Ethnicity	Minority % All Students	5.6%	9.2%	8.4%	8.9%	10.1%
	Minority % Known Students	5.6%	9.2%	8.8%	9.7%	11.1%
	African American %	4.2%	3.4%	1.1%	1.0%	0.0%
	American Indian %	0.0%	0.0%	0.0%	0.0%	0.0%
	Asian American %	1.4%	2.3%	2.1%	2.0%	2.9%
	Hispanic %	0.0%	3.4%	5.3%	5.9%	7.2%
	Caucasian %	93.1%	90.8%	87.4%	83.2%	81.2%
Gender	Ethnicity % Not Available	1.4%	0.0%	4.2%	7.9%	8.7%
	Male %	27.8%	31.0%	27.4%	23.8%	24.6%
	Female %	72.2%	69.0%	72.6%	76.2%	75.4%
FT-PT Status	Gender % Not Available	0.0%	0.0%	0.0%	0.0%	0.0%
	Full-Time %	43.1%	50.6%	54.7%	44.6%	34.8%
FTE & Retention	Part-Time %	56.9%	49.4%	45.3%	55.4%	65.2%
	Program FTE	24.0	30.3	33.0	32.7	21.7
	Core FTE	14.2	14.5	16.1	16.3	14.0
	Core Retention	99.3%	98.6%	98.1%	95.7%	91.2%
	Core Success C	96.5%	96.5%	95.5%	88.2%	89.5%
	Core Success B	78.5%	87.1%	85.3%	75.1%	79.1%

Market
Growth/Share

Current District Market Share: 34%

5 Year District Market Growth: 8.4%

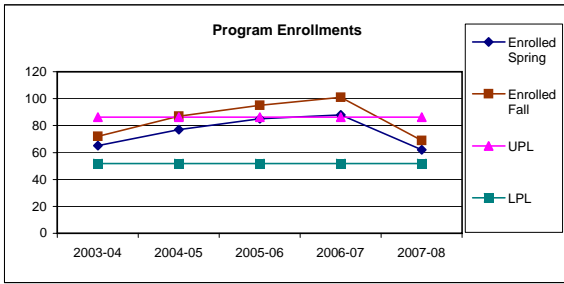
Current State Market Share: 54.3%

5 Year State Market Growth: 1.2%

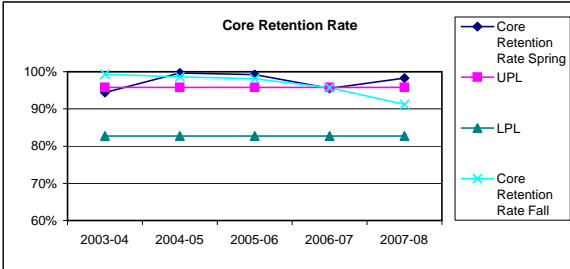
		Spring Semester				
		2003-04	2004-05	2005-06	2006-07	2007-08
Program Enrollment		65	77	85	88	62
Age	Age % 22 & Under	50.8%	62.3%	74.1%	64.8%	62.9%
	Age % 23-39	38.5%	29.9%	21.2%	30.7%	33.9%
	Age % 40 & Over	10.8%	7.8%	4.7%	4.5%	3.2%
	Age % Not Available	0.0%	0.0%	0.0%	0.0%	0.0%
Ethnicity	Minority % All Students	6.2%	9.1%	9.4%	11.4%	9.7%
	Minority % Known Students	6.3%	9.1%	9.8%	12.5%	10.7%
	African American %	3.1%	2.6%	1.2%	0.0%	0.0%
	American Indian %	0.0%	0.0%	0.0%	0.0%	0.0%
	Asian American %	1.5%	2.6%	2.4%	3.4%	3.2%
	Hispanic %	1.5%	3.9%	5.9%	8.0%	6.5%
	Caucasian %	92.3%	90.9%	87.1%	79.5%	80.6%
Gender	Ethnicity % Not Available	1.5%	0.0%	3.5%	9.1%	9.7%
	Male %	29.2%	29.9%	24.7%	23.9%	22.6%
	Female %	70.8%	70.1%	75.3%	76.1%	77.4%
FT-PT Status	Gender % Not Available	0.0%	0.0%	0.0%	0.0%	0.0%
	Full-Time %	52.3%	58.4%	56.5%	52.3%	48.4%
FTE & Retention	Part-Time %	47.7%	41.6%	43.5%	47.7%	51.6%
	Program FTE	22.4	29.0	30.2	30.3	21.7
	Core FTE	16.6	19.4	18.1	19.3	15.3
	Core Retention	94.4%	99.7%	99.3%	95.5%	98.3%
	Core Success C	93.6%	96.7%	98.5%	89.3%	97.2%
	Core Success B	81.2%	75.1%	90.4%	78.4%	89.8%

		Summer Semester				
		2003-04	2004-05	2005-06	2006-07	2007-08
Program Enrollment		6	8	6	6	10
Age	Age % 22 & Under	33.3%	62.5%	50.0%	50.0%	50.0%
	Age % 23-39	33.3%	37.5%	33.3%	50.0%	50.0%
	Age % 40 & Over	33.3%	0.0%	16.7%	0.0%	0.0%
	Age % Not Available	0.0%	0.0%	0.0%	0.0%	0.0%
Ethnicity	Minority % All Students	0.0%	0.0%	16.7%	10.0%	10.0%
	Minority % Known Students	0.0%	0.0%	16.7%	10.0%	10.0%
	African American %	0.0%	0.0%	0.0%	0.0%	0.0%
	American Indian %	0.0%	0.0%	0.0%	0.0%	0.0%
	Asian American %	0.0%	0.0%	0.0%	0.0%	0.0%
	Hispanic %	0.0%	0.0%	16.7%	10.0%	10.0%
	Caucasian %	100.0%	87.5%	83.3%	90.0%	90.0%
Gender	Ethnicity % Not Available	0.0%	12.5%	0.0%	0.0%	0.0%
	Male %	50.0%	37.5%	33.3%	20.0%	20.0%
	Female %	50.0%	62.5%	66.7%	80.0%	80.0%
FT-PT Status	Gender % Not Available	0.0%	0.0%	0.0%	0.0%	0.0%
	Full-Time %	0.0%	0.0%	0.0%	0.0%	0.0%
FTE & Retention	Part-Time %	100.0%	100.0%	100.0%	100.0%	100.0%
	Program FTE	0.7	1.0	0.8	0.6	1.6
	Core FTE	0.0	0.1	0.0	0.1	0.0
	Core Retention	No Data	100.0%	No Data	100.0%	No Data
	Core Success C	No Data	100.0%	No Data	100.0%	No Data
	Core Success B	No Data	100.0%	No Data	100.0%	No Data

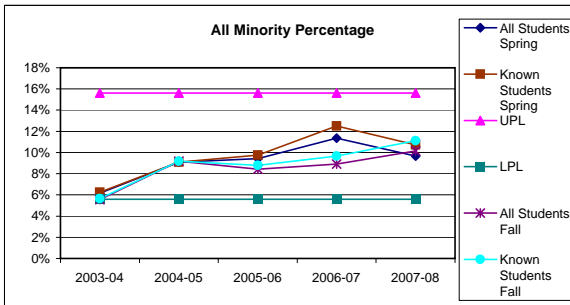
Madison Area Technical College
Five-Year Program Trends for Photography Program
Program Code:102031



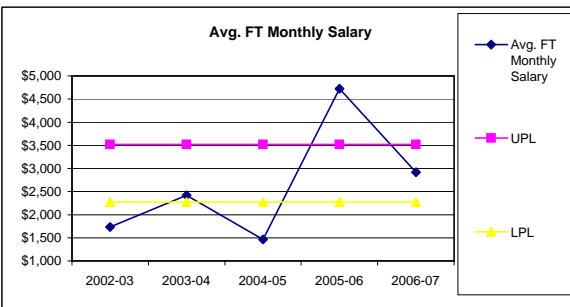
Program Enrollment :
 Number of students in a program who have been assigned a program code and took at least one degree course that year. The Upper Performance Limit (UPL) is calculated as 125% of the most recent year enrollments. The Lower Performance Limit (LPL) is 75% of the most recent year enrollments.



Core Retention Rate:
 Students who complete a course divided by the number of students making it through at least 10 days of the course length. The only courses counted are the core courses in the program. The Upper Performance Level (UPL) and Lower Performance Level (LPL) are calculated as plus and minus one standard deviation from the mean.

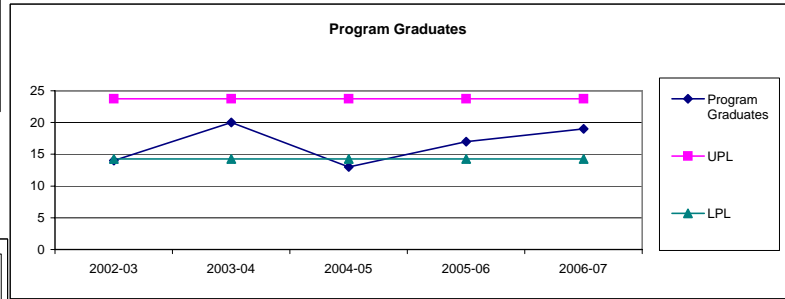


All Minority Percentage: Percentage of all minorities combined in a program compared to both the total number of students reporting an ethnicity and total students, including those students who did not report an ethnicity. The difference between the two percentages is the percentage of students who did not list an ethnicity. The Upper Performance Level (UPL) and Lower Performance Level (LPL) are calculated using the first and third quartile of the mean.

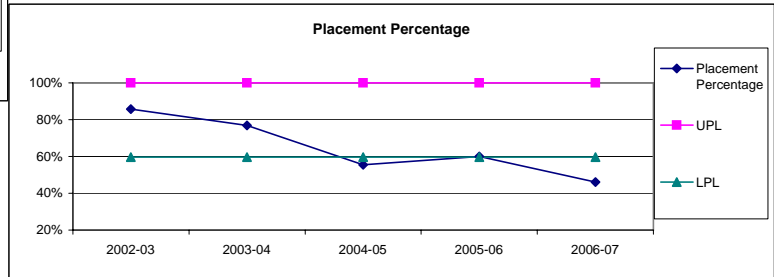


Average Full Time Monthly Salary:
 Average monthly salary of MATC graduates who say they work 34 hours or more. Data is obtained from the Graduate Followup Survey. The Upper Performance Level (UPL) and Lower Performance Level (LPL) are calculated as plus and minus one standard deviation from the mean of the last three years.

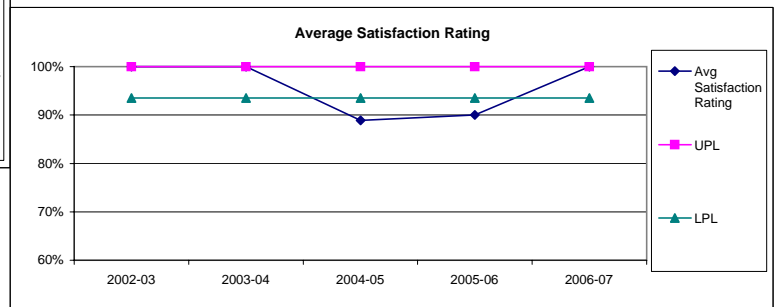
	2002-03	2003-04	2004-05	2005-06	2006-07
Program Graduates	14	20	13	17	19
% Satisfied	100.0%	100.0%	88.9%	90.0%	100.0%
Total Satisfaction Responses	8	14	9	10	14
Placement %	85.7%	76.9%	55.6%	60.0%	46.2%
Avg. FT Salary per Month	\$1,732	\$2,421	\$1,461	\$4,725	\$2,917
FT Salary Responses	3	3	4	3	1
Avg PT Salary per Hour	\$23.75	\$35.21	\$67.50	\$7.00	\$8.88
PT Salary Responses	2	6	1	1	4



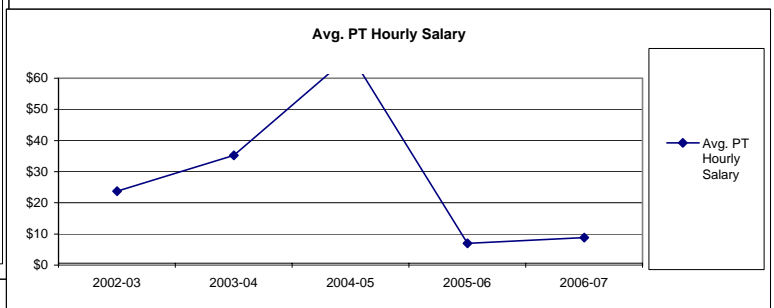
Program Graduates:
 Number of students who graduated from a program. The Upper Performance Limit (UPL) is calculated as 125% of the most recent year graduates. The Lower Performance Limit (LPL) is calculated as 75% of the most recent year graduates.



Placement Percentage:
 Graduates from a program who are employed in job related to training divided by graduates whose employment status is known and who are actively seeking employment. *Source: Six-month graduate follow-up study.* The Upper Performance Level (UPL) and Lower Performance Level (LPL) are calculated as plus and minus one standard deviation from the mean.

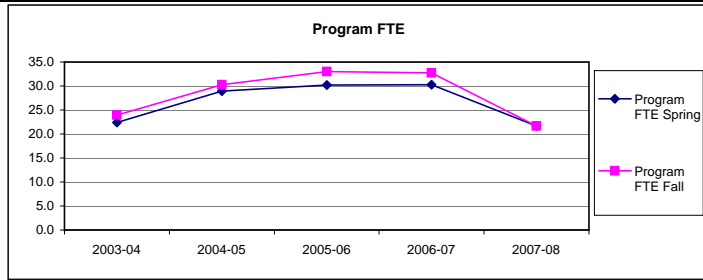


Average Satisfaction Rating:
 The percent of graduates in a program who responded to the six-month graduate follow-up survey that they were either satisfied or very satisfied with the training they received from MATC. The Upper Performance Level (UPL) and Lower Performance Level (LPL) are calculated as plus and minus one standard deviation from the mean.



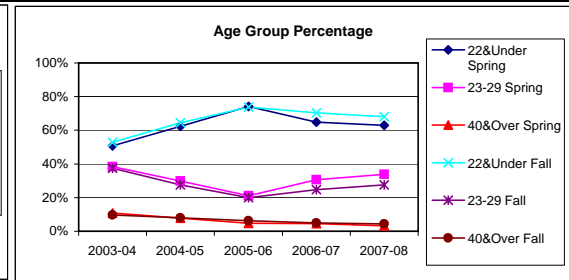
Average Part Time Hourly Salary:
 Average hourly salary of MATC graduates who say they work less than 34 hours. Data is obtained from the Graduate Followup Survey.

Madison Area Technical College
Five-Year Program Trends for Photography Program
Program Code:102031



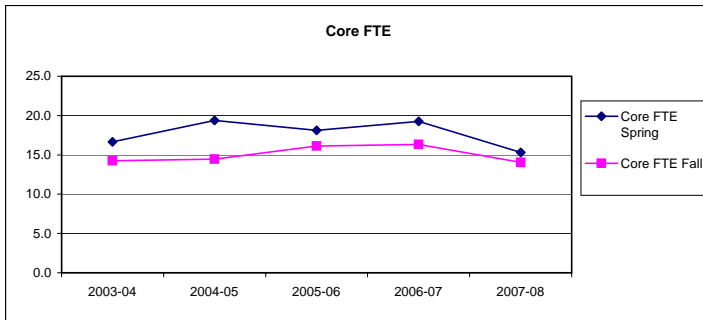
Program FTE:

Total FTE (credits/30) produced by students with a particular program code.



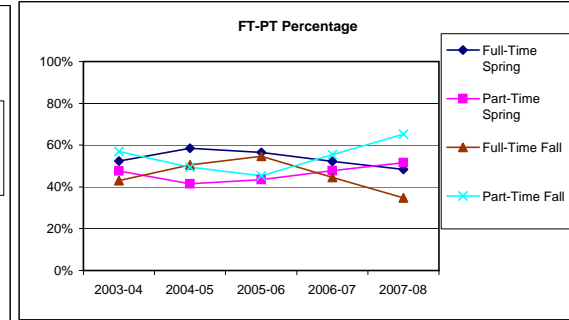
Age Group Percentage:

Percentage of students in a program in three different age categories.



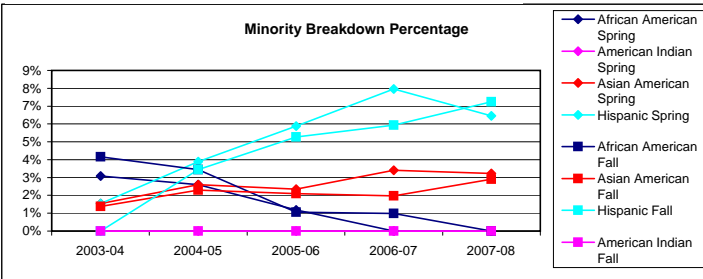
Core FTE:

FTE (credits/30) produced only from courses that are core to a particular program.

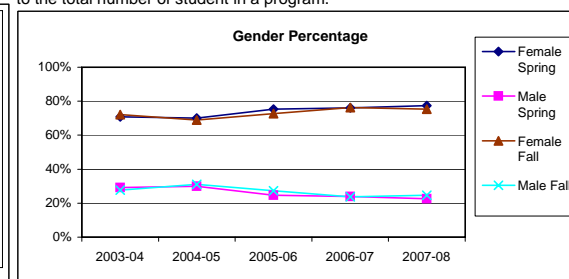


FT-PT Percentage:

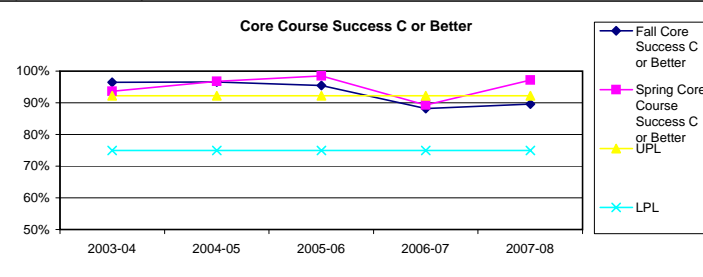
Percentage of full-time students (12 or more credits) in a semester compared to the total number of student in a program.



Minority Breakdown Percentage: Percentage of all self-reported minorities enrolled in a program compared to the total number of students reporting an ethnic identity. Individuals who have not reported an ethnicity are not included.

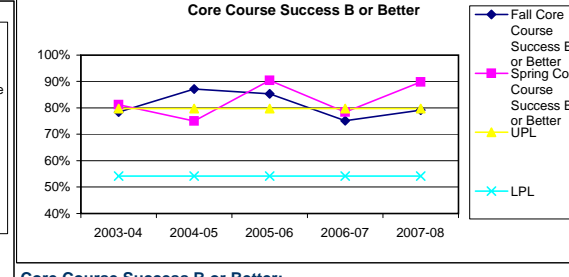


Gender Percentage: Percentage of male and female students in a program.



Core Course Success C or Better:

Students who obtain a C or better in a course divided by the number of students who are retained in that course. Only courses core to a program are included. The Upper Performance Level (UPL) and Lower Performance Level (LPL) are calculated as plus and minus one standard deviation from the mean.



Core Course Success B or Better:

Students who obtain a B or better in a course divided by the number of students who are retained in that course. Only courses core to a program are included. The Upper Performance Level (UPL) and Lower Performance Level (LPL) are calculated as plus and minus one standard deviation from the mean.